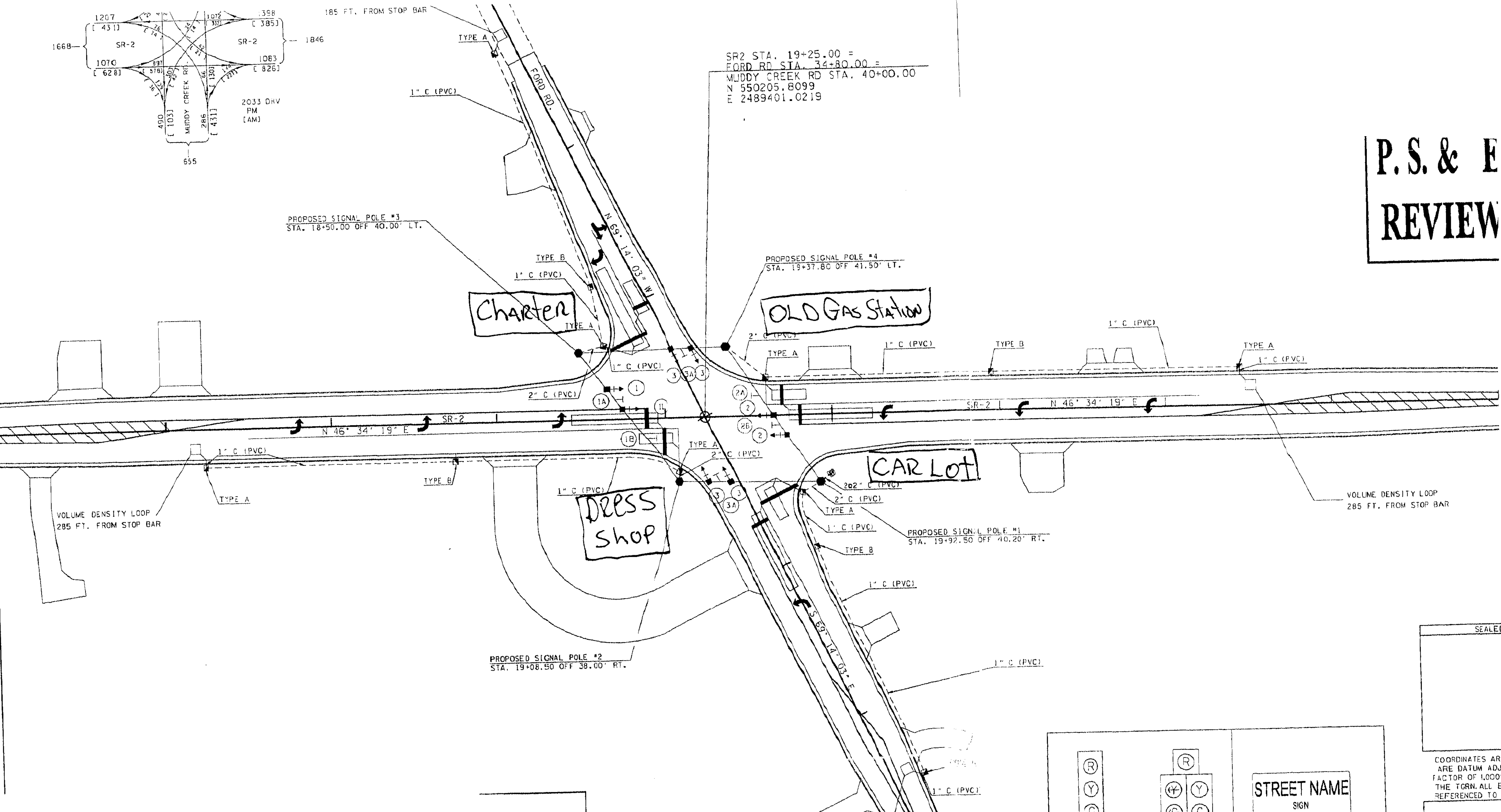


SR2 STA. 19+25.00 =  
 FORD RD STA. 34+80.00 =  
 MUDDY CREEK RD STA. 40+00.00  
 N 550205.8099  
 E 2489401.0219

**P. S. & E**  
**REVIEW**



PROPOSED SIGNAL POLE #3  
 STA. 18+50.00 OFF 40.00' LT.

PROPOSED SIGNAL POLE #4  
 STA. 19+37.80 OFF 41.50' LT.

PROPOSED SIGNAL POLE #1  
 STA. 19+92.50 OFF 40.20' RT.

PROPOSED SIGNAL POLE #2  
 STA. 19+08.50 OFF 38.00' RT.

VOLUME DENSITY LOOP  
 285 FT. FROM STOP BAR

VOLUME DENSITY LOOP  
 285 FT. FROM STOP BAR

SEALED

COORDINATES ARE  
 ARE DATUM ADJU  
 FACTOR OF 1.0009  
 THE TGRN. ALL EL.  
 REFERENCED TO T

