

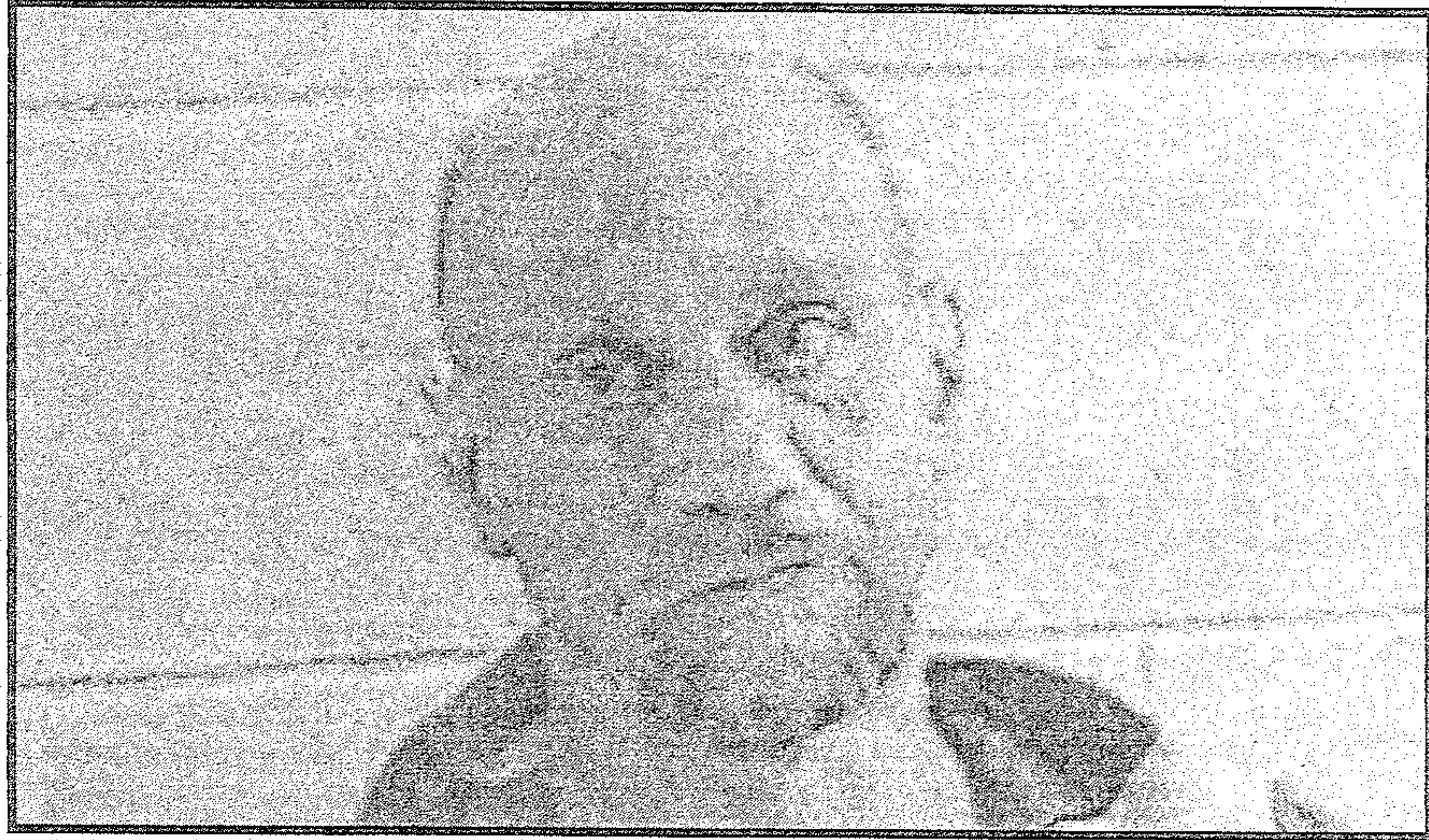
The Daily Edition

50¢

Serving Loudon, Monroe and Surrounding Counties

Monday, January 13, 2020

Philadelphia man evades law and tries to go on home



Richard Kidd

see Evade pg. 2

Drinking, driving and taking pills after a party



Heather Duncan

see Party pg. 3

Woman hits victim with 2 Gallons of punch



Crystal Brown

see Punch pg. 3

Warrant and arrest with guns and drugs



Avery Sarten

See Warrant P.3

2020 Sandhill Crane Festival Set for January 18-19

The 29th edition of the annual Tennessee Sandhill Crane Festival is set for Jan. 18-19 (Saturday-Sunday) at the Hiwassee Refuge and Birchwood Community Center.

The Tennessee Wildlife Resources Agency is the primary

sponsor for the 29th edition of the festival and many staff members and volunteers will be contributing their services. The festival is a celebration of the thousands of sandhill cranes that migrate through or spend the winter on See Asylum P.4



Verse of the Day

My son, if sinners entice you, do not give in to them.

— Proverbs 1:10

Wazzup

Free skating lessons on Sunday @ 11 at the Cool Sports behind

Dixie Lee Liquor.

Weather

Today: Cloudy. High of 61F.

Tonight: Rain. Low of 51F

Tuesday: Thunderstorms. High of 66F.

Tuesday night: Rain. Low of 56F

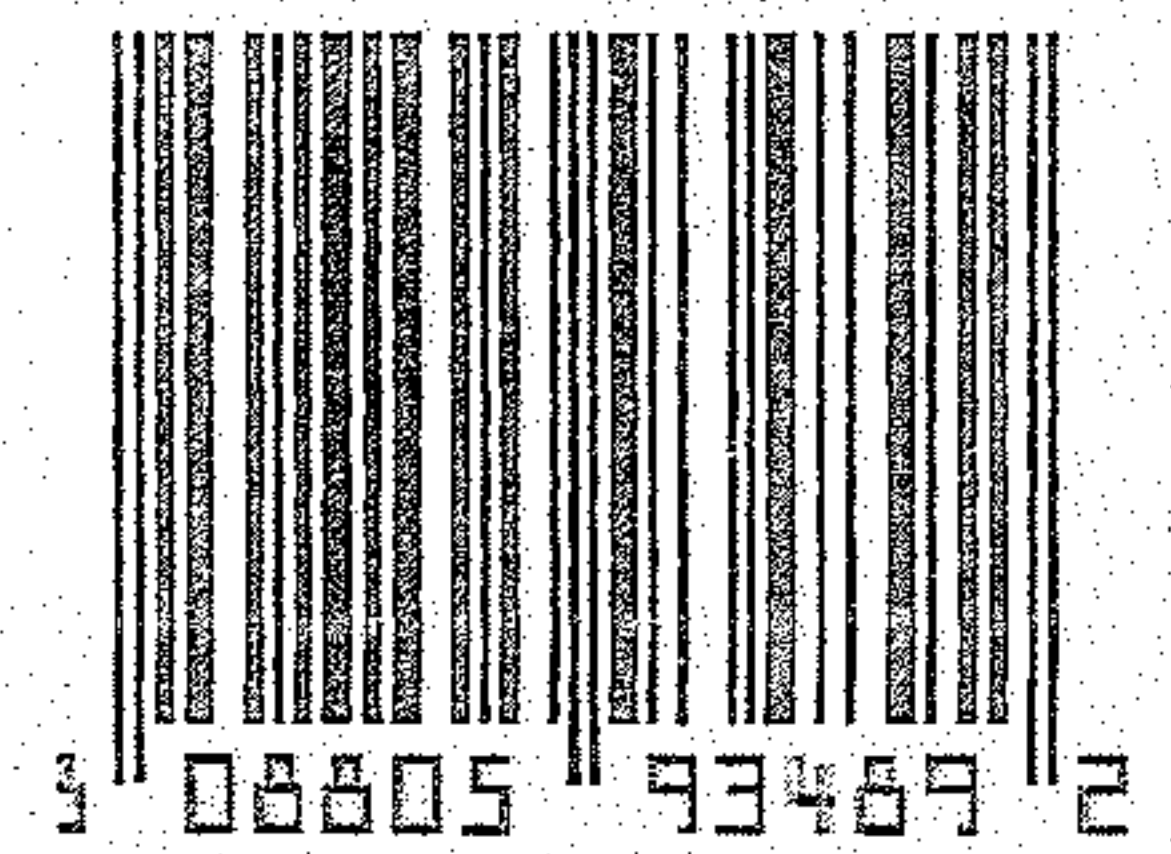
Horoscopes

Capricorn 12/22-01/19

Your heart is working overtime sorting out which direction to aim your undivided attention. A significant other, or even an adversary, floods your emotional bandwidth today. The Cancer Lunar

Eclipse lands in your 7th House of Relationships, prompting you to demand more from others or to feel as if everyone wants more from you. You might wonder if you're behaving at your finest

(Continued on page 6)



Evade

Richard Kidd, 47, Old Lee Hwy Philadelphia, was charged with Simple Possession, Evading Arrest, Driving on Revoked/Suspended License, DUI, Lights Required on Motor Vehicle, and Violation of Implied Consent. Deputy C. Rogers LCSO, observed a white vehicle with the driver side brake light out traveling on Hwy 11 in the area of Sunnyside Road.

Deputy initiated a traffic stop as the vehicle turned onto Old Lee Hwy, the vehicle did slow after Deputy emergency lights were activated, then he initiated his sirens with the lights the vehicle did not attempt to brake or stop. Eventually the vehicle turned down a driveway on Old Lee Hwy and the driver Richard Kidd exited the vehicle and attempted to enter the residence. Deputy gave Kidd

verbal command to get on watery eyes, and was not the ground at which time making verbal sense. A Deputy W. Jenkins arrived TN. ID was located and on scene and Kidd was dispatched advised Kidd's license were revoked. A strongly of an alcoholic search of Kidd's person 6 beverage, had bloodshot

Evade ctd. to P. 3

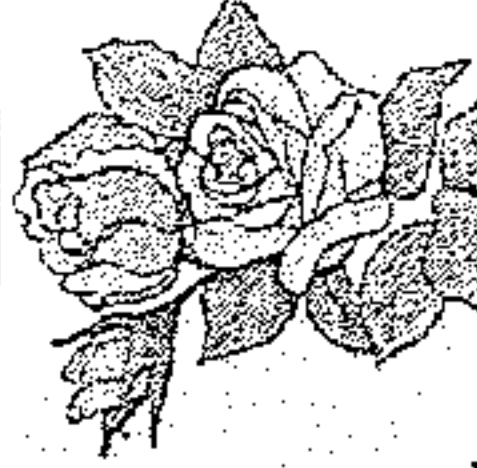
Notice: The Daily Edition does not knowingly accept fraudulent or misleading materials. The Daily Edition cannot guarantee the validity of offerings or statements contained herein. All liability for the contents of all advertising, and for any claims that may arise therefrom, is the responsibility of the advertiser or its agency. The Daily Edition reserves the right to reject, edit, or abbreviate any advertisement submitted. Advertising is accepted with the understanding that all liability for all copyright violations is the sole responsibility of the advertiser. Photographs, artwork and other copy submitted for publication is considered the sole property of the advertiser. The Daily Edition will make every effort but will not be liable for failure to publish and ad or for typographical and layout errors. All statements and information about highlights featured items, letters to the editor, herein are those solely given to the interviewer or writer and the Daily Edition assumes no responsibility of the accuracy or validity thereof. The Daily Edition will gladly reprint at no charge that part of an advertisement in which an error occurs provided a claim is made within 3 days of the first publication of the ad. Information contained in the Wazzup is received anonymously and the Daily Edition assumes no responsibility for information and reserves the right to edit or reject any and/or all submissions. The Daily Edition is a daily newspaper of general circulation in Loudon County defined under TCA 2-1-104(a)(13). The Daily Edition also serves Monroe, Knox, Anderson, Roane and Blount counties and serves 30,000 readers weekly. Send mail to PO Box 1240, Lenoir City TN 37771. 865-771-2249. email: dan1204us@yahoo.com
The Daily Edition is Loudon County's premier public interest and paid advertising paper. The Daily Edition is produced and published daily Monday through Friday and is circulated throughout Loudon County and parts of Monroe and Knox Counties. Display advertising rates \$5.00 per column inch and quantity discounts available. Call for information on upcoming promotions and events.

Nature's Crossing Health and Beauty
865-407-1397
8901 Oak Ridge Hwy

Herbal Tinctures Soap
Jewelry Crystals
Bath Bombs Candles

FREE 8 oz. Bath Salts with any \$25 Order

Natural Health and more



CALL 986 1100 **Buy Here Pay Here** **Guaranteed Credit Approval** **CALL 986 1100**

New Years Sales Event



Chrysler 200, Auto, AC, Great Heater
\$500 Down Delivers*



Jeep Patriot Loaded, Extra Clean
\$500 Down Delivers*



Grand Cherokee 4WD, All Power
\$500 Down Delivers*

CHECK US OUT ON FACEBOOK

Lenoir City AUTO SALES

Everybody Rides
Se Habla Espanol



Honda Pilot, 3 Row, Leather, AW
\$500 Down Delivers*



Trail Blazer AWD, Leather, DVD, Heated Seats
\$500 Down Delivers*



Nissan Rogue Ex. Clean, 4WD, All Power
\$500 Down Delivers*



Mercury Mariner, V6, Extra clean
\$500 Down Delivers*

**1201 West Broadway
Lenoir City**

* Plus Tax, Tag, Title and Fees. See Dealer for Details

CALL 986-1100 **CALL 986-1100**

Evade ctd from P.2

Gabapentin were found in his pocket. Sgt. J. Bowen arrived on scene and attempted to conduct sobriety test. Kidd was unsteady on his feet and after failing to perform the walk and turn Deputy terminated the test. Deputy did locate several open containers of liquor in the vehicle. Richard Kidd was placed under arrest and transported to the Loudon County Jail.

Party

Heather Duncan, 33, Old Niles Ferry Road Maryville, was charged with DUI, and Driving on Roadway laned for Traffic. Deputy Brandon Dishner LCSO, observed a red vehicle traveling on Hwy 321 that had swerved and crossed the fog line. Upon getting behind the vehicle it then entered a driveway off Hwy 321. A very short time later the vehicle entered the roadway on Hwy 321

the vehicle then merged onto Hwy 444 crossing the fog line multiple times. Deputy then activated his emergency equipment and conducted a traffic stop and made contact with the driver Heather Duncan and the passenger. Deputy could smell a strong odor of an alcohol coming from inside the vehicle. Deputy ask driver to exit the vehicle Duncan stated that her and her friend were at a friends house for a party. When Duncan was ask if she had anything to drink she stated she had 2 mix drinks. Deputy spoke to the passenger and he stated Duncan had 6-8 drinks and had took prescription medication. Duncan was ask to perform sobriety test which she did poorly on and was placed under arrest. Heather Duncan agreed to blood draw and was transported to the ER for blood draw then to the Loudon County Jail

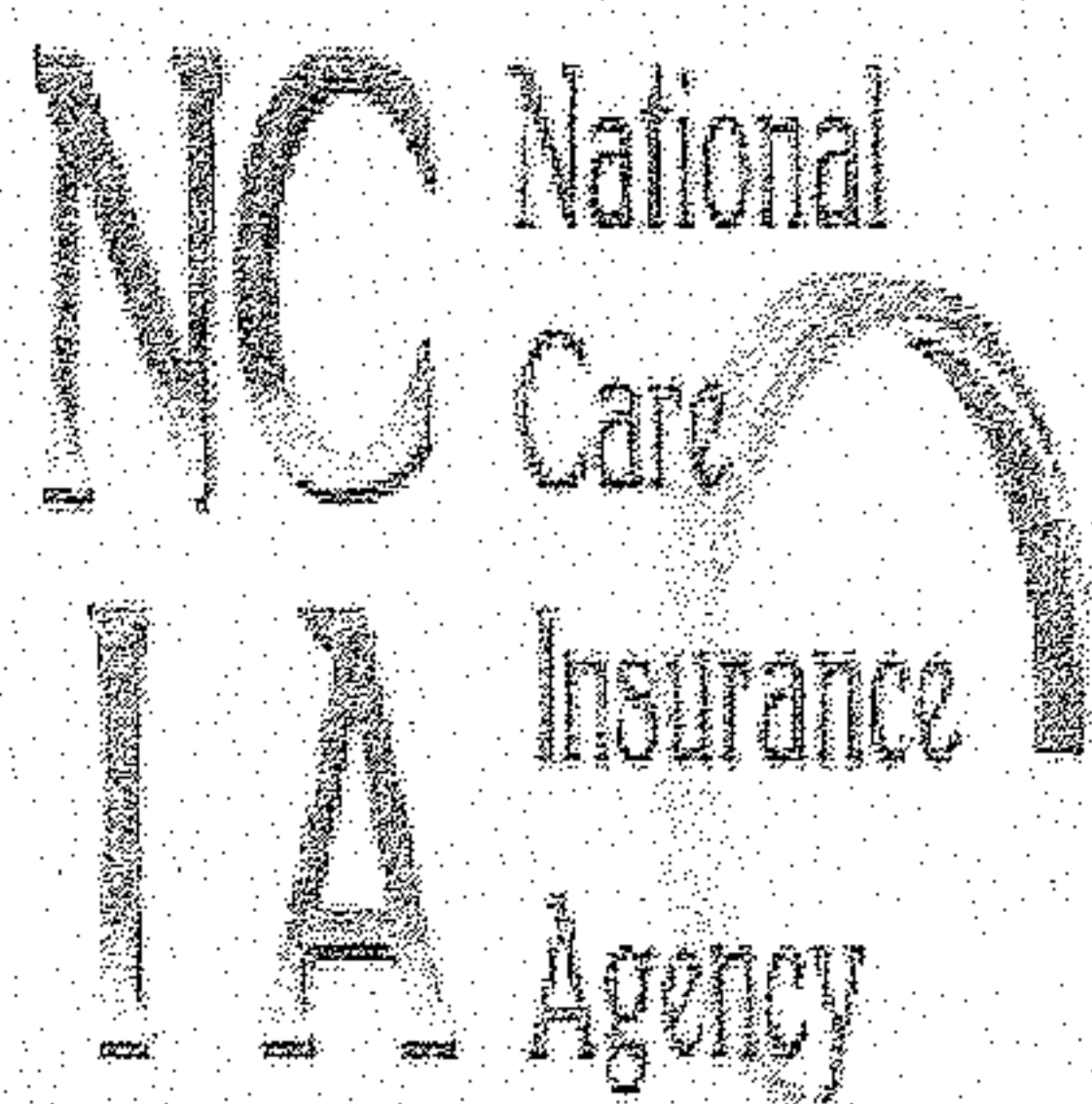
Punch

Crystal Brown, 37, Donaldson Road Philadelphia, was charged with Domestic Assault. Deputy M. Rodriguez LCSO, responded to Donaldson Road in regards to a domestic. Upon Deputy arrival he spoke the victim who advised Crystal Brown had been acting like she had been high off an unknown drug and was acting strange. The victim further advised he became aggravated with Brown for leaving the front door open, Brown then grabbed a two gallon jug of punch and hit the victim with it. Brown took off on foot before Deputies arrival. Crystal Brown was located walking around Calloway Road. After an investigation Crystal Brown was the primary aggressor and placed under arrest.

Warrant

Avery Sarten, 55, Pardue Lane Lenoir City, was charged with Unlawful Carrying or Possession of a Weapon, Theft of Property, Simple Posses-

sion, Poss. Of Drug Para., and Mfg/Del/Sale or Poss. Of Meth. Deputy K. Kirkland LCSO, come in contact with Avery Sarten at his residence. Sarten was sitting in the driver seat of a black vehicle in the yard. Deputy advised Sarten that he had an active warrant for theft. Deputy ask Sarten if he had anything illegal on him and he stated yep some dope in his pocket. Deputy located a small plastic baggie in his pocket containing a white powder substance which Sarten admitted to it being meth. Deputy also located four 9mm bullets, Sarten was placed into custody. A search of Sarten vehicle Deputy located 3 yellow pills identified as gabeapentin, - glass pipe with drug residue, and a Skyy 9mm semi-automatic pistol loaded with one in the chamber, and 6 in the magazine in the front seat where Sarten was sitting. Sarten is a convicted felon. Avery Sarten was placed under arrest and transported to the Loudon County Jail.



Looking For Affordable

- * Health Plans
- * Life Insurance
- * Vision Insurance
- * Dental Insurance
- * Medicare Supplements

Call us Today for a FREE Quote!

**9041 Executive Park Drive, Suite 250
Knoxville, TN. 37923
Office: 865-470-4162**

Breakfast
Lunch
Daily
Specials



GiGi's Kitchen

Sandy Gaston
836 Mulberry St
Loudon, Tennessee
(865)207-7724
sggas64@gmail.com

Birds

and around the Hiwassee Refuge in Birchwood as well as an opportunity to focus attention on the rich wildlife heritage of the state and the Native American history of the area. Beginning in the early 1990s, the recovering population of eastern sandhill cranes began stopping at the Hiwassee Refuge on their way to and from their wintering grounds in Georgia and Florida. TWRA has been managing the refuge for more than 60 years for waterfowl, and it provides sandhill cranes a combination of feeding and shallow water roosting habitat. Thousands of birds now spend the entire winter at the confluence of the Hiwassee and Tennessee rivers. Free bus shuttle service will be available from the Birchwood Community Center to the Hiwassee Refuge and Cherokee Removal Memorial Park each day beginning at 8 a.m.

No public parking is available at the refuge. The final shuttle will leave the refuge at 4 p.m. each day. Various vendors will be at the Birchwood Community Center also beginning at 8 a.m. In addition, breakfast will be available for purchase at the community center each day beginning at 7 a.m. Lunch will also be available and the cafeteria will be open throughout the day and is operated by the Birchwood Area Society Improvement Council. Music and special programs will be ongoing throughout each day. A children's arts and crafts booth will also be in operation at the community center. The International Crane Foundation and its mascot Hope will be joining TWRA at this year's festival. The Crane Foundation's headquarters is in Baraboo, Wis. TWRA's Hiwassee Refuge naturally lends itself in supporting

the mission of the Foundation, which is to conserve cranes and the ecosystems, watersheds and flyways in which they depend. Children can visit with Hope, the whooping crane mascot, at 10 a.m. each day of the festival. The American Eagle Foundation will be present for its always-popular live raptor show each day with times at 2 p.m. on Saturday and 1 p.m. on Sunday. Mary Feely, a Chattanooga native, will present a program at 1 p.m. Saturday on changes in avian diversity and potential invasive seed-dispersal post-wildlife in a southeastern deciduous forest. She teaches biology and ecology at Chattanooga State and works as an editorial assistant to an international environmental journal and an environmental journalism handbook at the West Chair of Excellence.

An official welcome and live music will start the programs each day at 11 a.m. TWRA Multimedia Division Chief Don King, also a Nashville recording artist, and the group Second Nature will perform. Local artist and songwriter Tanner Hillis will also perform Saturday. The Mt. LeConte Jug Band performs Sunday at 11 a.m. and will be followed by Don King. The nearby Cherokee Removal Memorial will feature Native American folklore specialists.

They will present performances, artifacts and objects used in everyday life by Native American inhabitants in the Hiwassee River area. Along with the wildlife viewing at the refuge, wildlife and birding experts will be on site. They will provide visitors with a unique educational experience by sharing information and viewing scopes. The festival will conclude by 4 p.m. Sunday. The Hiwassee Refuge comprises about 6,000 acres. The Birchwood Community Center will be open from 10 a.m. to 4 p.m. Birds ctd. to p. 5

Public Notice

Loudon County Commission will hold a Special Called Meeting on January 21st at 6:00 at the County Office Building to discuss the ambulance contract, money allotment for study on new Annex placement, MOU between Loudon County and Lenoir City and TDOT Resolution. Workshop to follow.

Now Accepting Applications
For 2 and 3 bedroom Apartments
Apply Monday and Tuesday
From 8:00 a.m. - 4:00 p.m.
MCGHEE SQUARE APARTMENTS
Lenoir City, TN
Rental Office: (865) 986-6955

Birds ctd. from P.4

munity Center is only three miles from the wildlife-viewing site at the Hiwassee Wildlife Refuge. The Cherokee Removal Memorial is adjacent to the refuge near the Tennessee River.

Sandhill Crane Festival presenting sponsors are Birchwood Area Society Improvement Council and Cherokee Removal Memorial Park. Partners include the Southeast Tennessee Tourism Association, American Eagle Foundation, Hamilton County, Meigs County Tourism, and Rhea County Tourism.

Lewis County Quarantined for Emerald Ash Borer

Another Tennessee county has been quarantined for Emerald Ash Borer (EAB) after detection of the forest-devastating insect.

Lewis County joins 62 other counties under a state and federal EAB quarantine. The quarantine restricts the move-

ment of firewood, ash nursery stock, ash timber, and other material that can spread EAB. The tree-killing beetle was recently found in Lewis County through the United States Department of Agriculture's EAB detection program.

"When EAB kills an ash tree, that dead tree can be hazardous to people and property," State Forester David Arnold said. "We encourage landowners and communities to inventory their ash trees and develop a plan to minimize potential impact of EAB."

Since being introduced to the U.S. in the 1990s, the destructive insect has killed millions of ash trees and spread to 35 states. Citizens are encouraged to report any symptomatic ash trees to the Tennessee Department of Agriculture (TDA) and follow these guidelines:

- Don't transport firewood, even within the state.
- Use firewood from local sources near where

you're going to burn it or purchase certified heat-treated firewood.

• If you have moved firewood, burn all of it before leaving your campsite.

• Watch for signs of infestation in your ash trees. If you suspect your ash tree could be infested with EAB, visit www.tn.gov/agriculture/businesses/plants/plant-pests--diseases-and-quarantines/ag-business-es-eab.html or call TDA's Plant Certification Office at 615-837-5137.

TDA's Division of Forestry estimates that 5 million

urban ash trees in Tennessee worth a total of \$2 billion are potentially at risk from EAB. There are an estimated 261 million ash trees on Tennessee timberland, with an estimated value of \$9 billion.

For more information about EAB and other destructive forest pests in Tennessee, visit www.protecttnforests.org. Follow ProtectTNForests on Facebook, Instagram, and Twitter for updates on the harmful impacts insects and diseases have on our trees, where pests are found, and what landowners can do to help protect their trees.

Public Notice
 There will be a Loudon County Public Records Commission Meeting
 5:00 p.m.,
 Tuesday, January 14, 2020
 Loudon County Office Building

BIMBO'S
FIREWORKS
 201 Highway 521 N
 175 LENOIR CITY EXIT 81

Celebrate
 with
FIREWORKS
 from
BIMBO'S

Orange & White and BOOMS!

Super Loud!

Vivid Starburst Colors and Extra Loud Explosions!