

The Daily Edition

50¢

Serving Loudon, Monroe and Surrounding Counties

Friday, November 01, 2019

LCSO charges man when they find victim with bruises and holes in the walls.....



Jarvis Payne

see Charged pg. 2

Intoxicated victim then becomes assailant after assault on juvenile



Dorothy Payne

see Assault pg. 3

Dosed with methadone then decided it was a good idea to drive home



Lisa Davis

see DUI pg. 3

State Appropriates Millions of Dollars for Rural Counties

The state of Tennessee will use millions of dollars in grant money to help 38 distressed and at-risk counties across Tennessee bolster workforce development efforts. The funding was approved by the Tennessee Workforce

see State pg. 4

Director Addresses IACP Wray Discusses Key Aspects of Leadership at Annual Conference

The FBI's commitment to work collaboratively with its law enforcement partners is one of four key leadership aspects driving the Bureau's work, FBI Director Christopher Wray told a law enforcement audience Saturday. At the annual International Association of Chiefs of Police conference in Chicago, Wray spoke of the close working relationships that FBI personnel have with state and local law enforcement.

See FBI P.3



Verse of the Day

The Lord is faithful, and he will strengthen and protect you from the evil one.

— 2 Thessalonians 3:3

Wazzup

Everyone bundle up!

It's gong to be a COLD one the next few days.

Weather

Today: Sunny. High of 52F.

Tonight: Cold. Low of 30F.

Saturday: Sunny. High of 56F

Saturday night: Cold. Low of 30F

Sunday: Sunny. High of 53F

Sunday night: Clear. Low of 31F

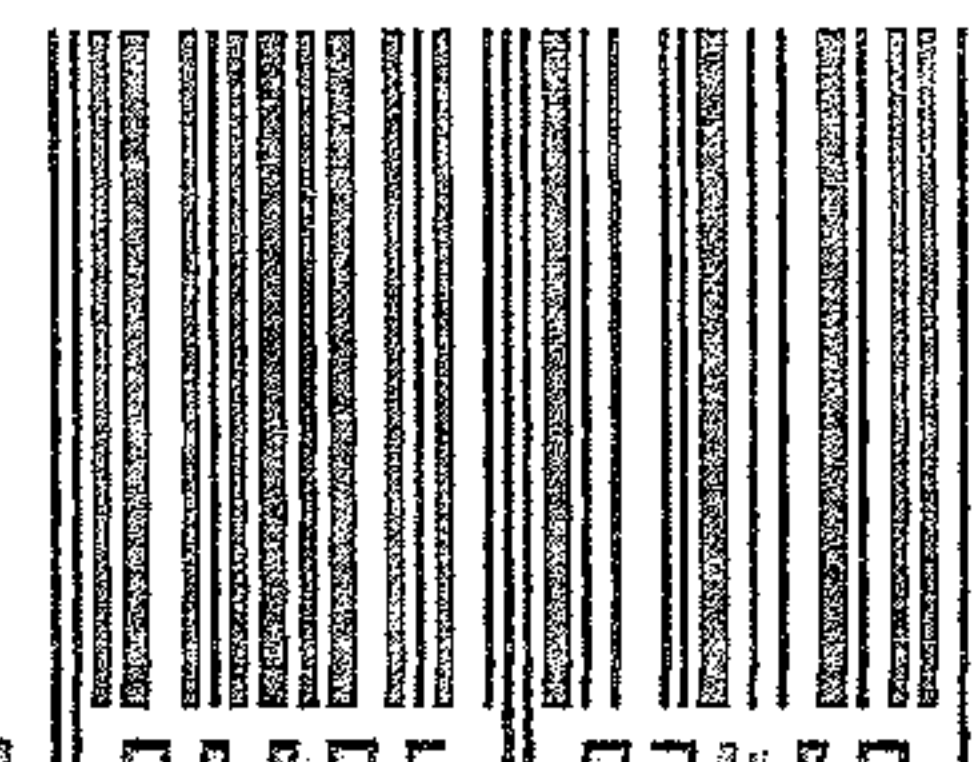
Horoscopes

Scorpio 10/23–11/21

Your first thoughts are

not the best ones to let fly out of your mouth today. You may impulsively say something you dont mean, creating a situation where you need to recant what you said. Let your initial judgements sit and

(Continued on page 6)



Charged

Jarvis Payne 37, Cress Lane Lenoir City, was charged with Domestic Assault. Deputy Brandon Dishner LCSO, responded to Cress Lane to a 911 hang up. Upon dispatch calling the number back a female answered the phone, confirmed the address and stated send someone. Upon arrival Deputy made contact with Jarvis Payne sitting

inside a vehicle parked in the driveway along with a female standing inside the front door of the residence. After speaking with Jarvis, Deputy made contact with the victim, who stated to Deputy please do not let Jarvis back in the residence. Victim was visually shaken, and had been crying. Victim stated they had been arguing, Deputy did observed several discol-

ored bruises on victim arm and legs. Victim did show Deputy multiple holes in walls and doors of the residence. Jarvis Payne was placed under arrest.

Place Your Ad In The
Daily Edition. Call
865-771-2249

Nature's Crossing Health and Beauty

865-407-1397

8901 Oak Ridge Hwy

Herbal
Tinctures

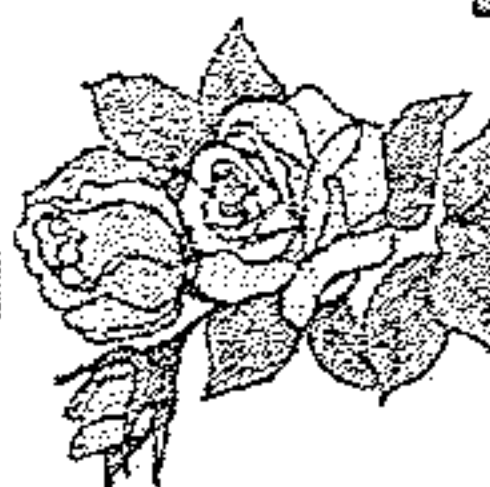
Soap

Bath Bombs

Jewelry

Candles

Crystals



FREE 8 oz. Bath Salts with any \$25 Order

Natural Health and more

Notice: The Daily Edition does not knowingly accept fraudulent or misleading materials. The Daily Edition cannot guarantee the validity of offerings or statements contained herein. All liability for the contents of all advertising, and for any claims that may arise therefrom, is the responsibility of the advertiser or its agency. The Daily Edition reserves the right to reject, edit, or abbreviate any advertisement submitted. Advertising is accepted with the understanding that all liability for all copyright violations is the sole responsibility of the advertiser. Photographs, artwork and other copy submitted for publication is considered the sole property of the advertiser. The Daily Edition will make every effort but will not be liable for failure to publish and ad or for typographical and layout errors. All statements and information about highlights featured items, letters to the editor, herein are those solely given to the interviewer or writer and the Daily Edition assumes no responsibility of the accuracy or validity thereof. The Daily Edition will gladly reprint at no charge that part of an advertisement in which an error occurs provided a claim is made within 3 days of the first publication of the ad. Information contained in the Wazzup is received anonymously and the Daily Edition assumes no responsibility for information and reserves the right to edit or reject any and/or all submissions. The Daily Edition is a daily newspaper of general circulation in Loudon County defined under TCA 2-1-104(a)(13). The Daily Edition also serves Monroe, Knox, Anderson, Roane and Blount counties and serves 30,000 readers weekly. Send mail to PO Box 1240, Lenoir City TN 37771. 865-771-2249. email: dan1204us@yahoo.com

The Daily Edition is Loudon County's premier public interest and paid advertising paper. The Daily Edition is produced and published daily Monday through Friday and is circulated throughout Loudon County and parts of Monroe and Knox Counties. Display advertising rates \$5.00 per column inch and quantity discounts available. Call for information on upcoming promotions and events.

CALL
986
1100

**Guaranteed
Financing**

Half and Half Sale

Pay 1/2 Your Down Payment Today and
The Other 1/2 Next Week!!!

Example: \$499 down today and \$499 next week!



**Lenoir City
AUTO SALES**

Everybody Rides

Se Habla Espanol

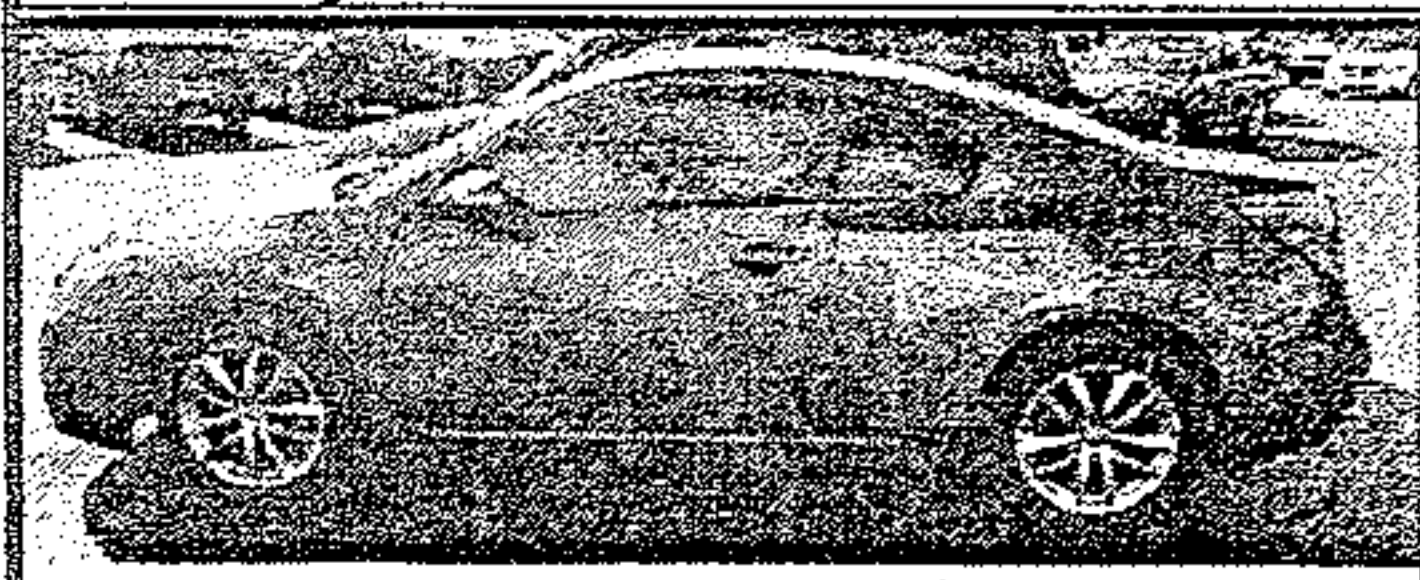
1201 West Broadway
Lenoir City

100%
Approval

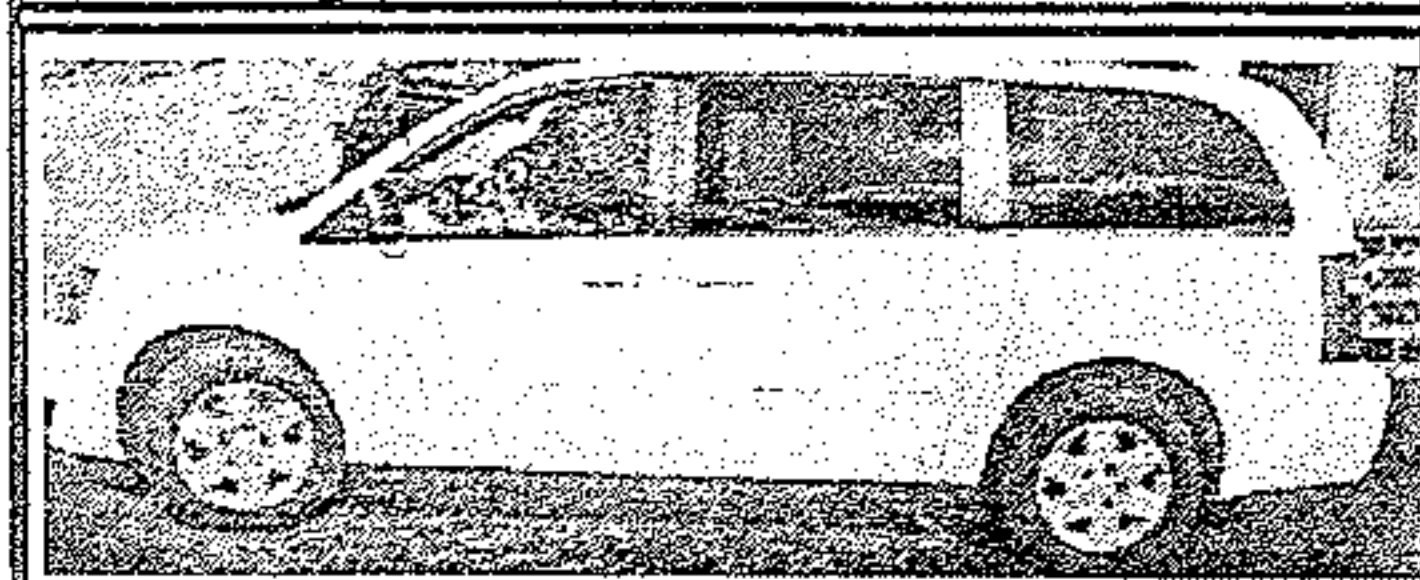
CALL
986
1100



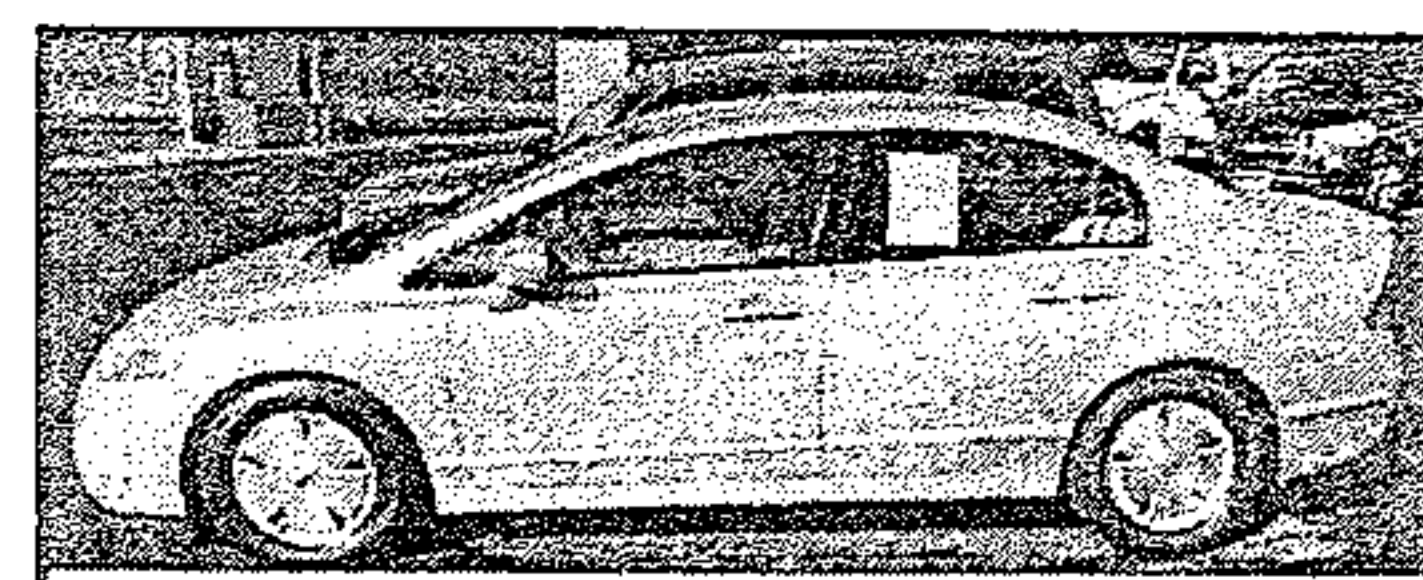
Armada, 4x4 Only \$699 down today and \$699 next week*



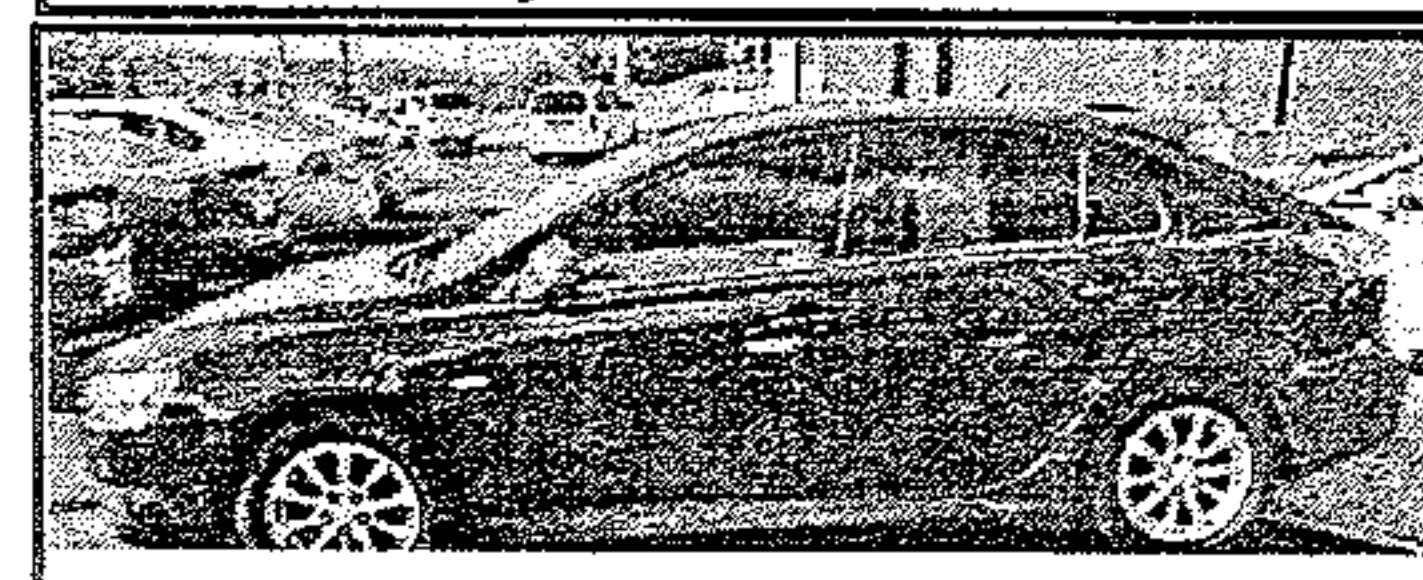
Altima, 2dr, V6 Only \$699 down today and \$699 next week*



Caravan, Stow & Go, Only \$599 down today and \$599 next week*



Civic Hybrid, Ex. Clean, Only \$599 down today and \$599 next week*



Lancer, 5 dr, auto, Only \$499 down today and \$499 next week*



Rogue, Ex. Clean, Auto, Only \$499 down today and \$499 next week*

CALL
986-1100

* Plus Tax, Tag, Title and Fees. See Dealer for Details

* Plus Tax, Tag, Title and Fees. See Dealer for Details

CALL
986-1100

Assault

Dorothy Payne, 35, Cress Lane Lenoir City, was charged with Domestic Assault. Sgt. Bowen LCSO, responded to Cress Lane on a juvenile problem. Upon arrival Deputy spoke to Dorothy Payne. Payne stated that the juvenile was telling a lie that she had hit him because they had taken his father to jail earlier for domestic assault. Deputy then spoke to the victim who stated after police had left the residence earlier Dorothy Payne continued to drink and became upset because she could not find her phone. After the phone was located Payne told victim to call him he ask who him was and Payne went to the bedroom and got a belt and struck victim in the side of the head with the medal part of the belt. Victim did have a small cut to the top of his head. Payne was so intoxicated Deputy could not understand her. Dorothy Payne was placed under arrest and a DCS referral was made.

DUI

Lisa Davis, 56, Main Street Loudon, was charged with DUI. Officer Jordan Samuels LCPD, was dispatched to a female intoxicated driver who just exited at the 81 mm and made a right hand turn onto Hwy 321. The complainant states that a blue vehicle was all over the roadway and almost hit construction barrels on Hwy 321. Officer observed the vehicle pass him on Hwy 321 at Hickman Street in the right lane of travel. Officer was able to get behind the vehicle and observed it had the left signal on, crossed over the right line twice, and nearly struck construction barrels. Officer initiated his emergency equipment and attempted to stop the vehicle. The driver ignored all emergency equipment and continued on until she was at the intersection on Hwy 321 and McGhee Blvd. Officer exited his vehicle and got the driver attention and told her to pull into the McDonald parking lot. The driver then parked in the roadway between McDonald and Ingles. Officer made contact with the driver identified as Lisa Davis.

Davis was ask to exit the vehicle. Officer had Davis perform sobriety test which she did poorly on. Davis stated she had just come from the methadone clinic and took a dose before heading home. Lida Davis was placed under arrest.

FBI

ment partners across the country — relationships

that are vital to keeping the American people safe. The Bureau works with its partners every day on task forces dedicated to eradicating child exploitation, combating terrorism, addressing counterintelligence threats, and more. Wray explained that it is essential to continue growing those partner-

FBI ctd. to P. 4

BIMBO'S FIREWORKS

120 Highway 321 N
I-75 LENOIR CITY EXIT 81

Orange & White and BOOMS!

Super Lode

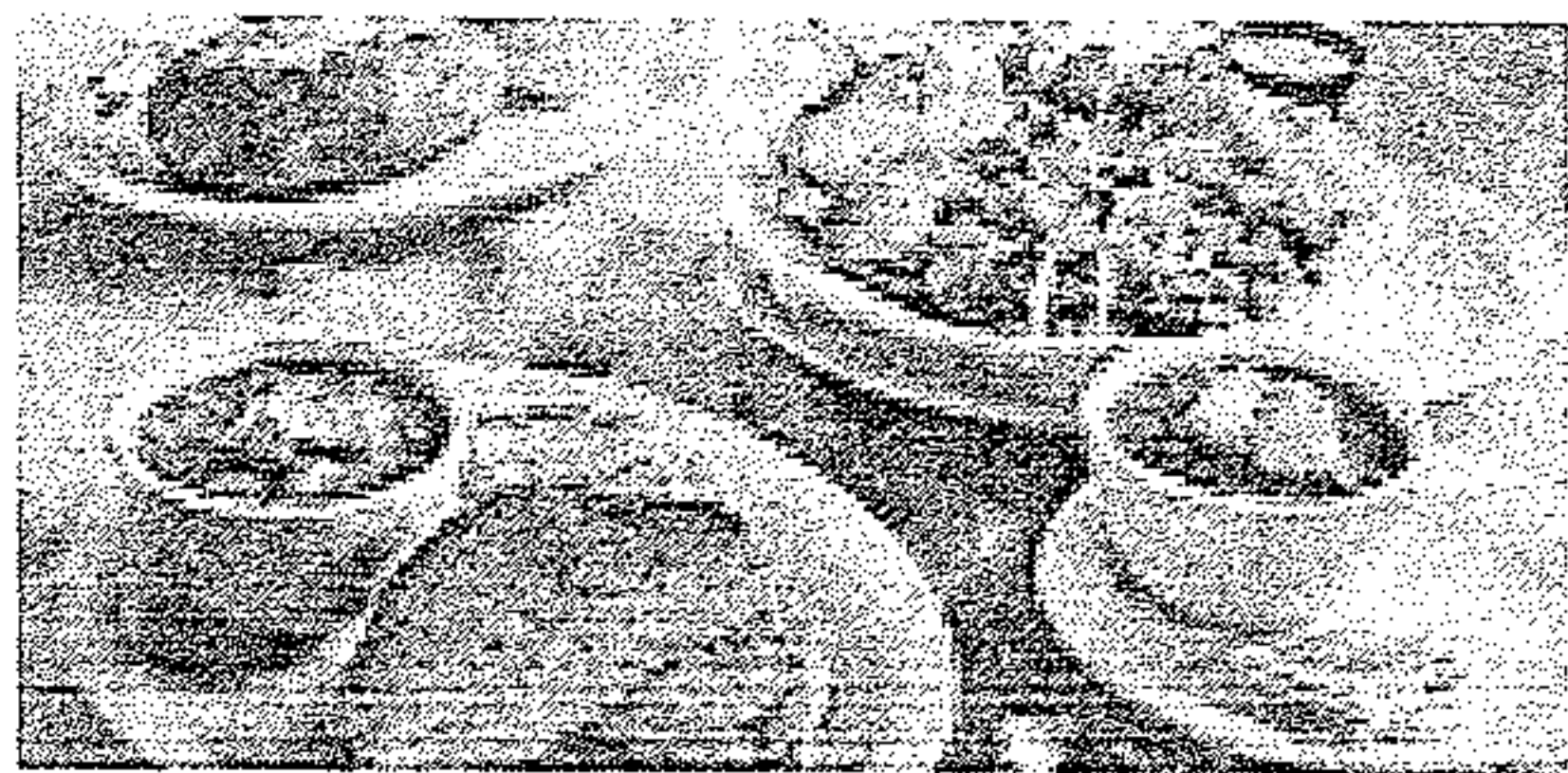
Vivid Starburst Colors and Extra Loud Explosions!

New Items Buy One Get One Free (at original price)

Celebrate with FIREWORKS from BIMBO'S

Best Deli in town for all you food needs

Breakfast
Lunch
Daily
Specials



GiGi's Kitchen

Sandy Gaston

836 Mulberry St
Loudon, Tennessee
(865)207-7724
sggas64@gmail.com

State

Development Board and aligns with Governor Bill Lee's rural initiatives.

The Rural Initiative Funding Opportunity Announcement (RIFOA) has made \$3 million in funding available to local workforce development boards to support workforce expansion efforts in the targeted counties.

The Tennessee Department of Labor and Workforce Development (TDLWD) accepted grant applications from the counties and determined the amount of funding each recipient would receive. The state's 15 distressed counties will split \$2.1 million of the \$3 million in grant money, with the remaining \$900,000 divided among 23 counties deemed at-risk by the state.

"In alignment with the Governor Lee's priorities for Tennessee, we are excited to be able to make these funds available," said TDLWD Commissioner Jeff McCord. "These grant dollars will foster the

opportunity to develop and maintain a qualified workforce in the places where it is needed most."

Each county will receive funding for specific programs local leaders feel can help address crucial workforce development needs in their areas.

"The members of the Tennessee Workforce Development Board want to do everything we can to give the residents in our rural communities the skills that will allow them to help themselves to better job opportunities," said board chairman Tim Berry. "These grants should provide new resources to which they may not otherwise have access, and provide them another step upward in their livelihoods." Tennessee's distressed and at-risk counties face workforce challenges that do not exist in the state's urban and metropolitan areas. Often, local leaders in rural counties are forced to navigate workforce obstacles such as geography,

See State ctd to P. 5

FBI ctd. from pg. 3

ships.

"We've got to push that foundation even further," Wray said.

"We've got to get to a place where the collaboration and the partnership is so second nature that we don't even stop to think about it anymore. You know the old saying: One team, one fight."

Wray also addressed the difficult and pressing issue of law enforcement suicides, stressing that agencies must work together to ensure officers have access to mental health treatment if they need it and to remove any stigma associated with seeking help.

"Every officer, every deputy, and every agent we lose is one too many," Wray said. "It's a loss to our organizations, a loss to our communities, and most importantly, it's a devastating loss to the loved ones they leave behind."

Wray said this issue has confronted many departments and confirmed that the FBI has dealt with suicide in its own ranks.

In addition to fostering strong partnerships, the other three guiding leadership principles Wray

described for the FBI are an uncompromising focus on process, community standing, and innovation. Wray encouraged the police chiefs to emphasize these tenants in their own agencies. Wray explained that he sees process as always doing the right thing in the right way. He said the FBI focuses on the basic core values of respect, objectivity, independence, and "following the facts wherever

they may lead and to whomever they may lead—no matter who likes it."

Wray also emphasized the need to address the standing of law enforcement within the community by focusing on the opinions of those who experience the work of officers and agents most directly—judges, jurors, suspects, victims, and victims' families.

"I'm talking about the opinions of the

FBI ctd. to pg. 7



**Pure Wellness
Hemp and CBD
Dispensary**

521 Hwy 321N, Suite 3

(next to Stained Ink)

**Don't Wait To Start Feeling Better
NOW!!!**

**We are The ONLY State Limit Hemp
Dispensary in the area!**

**Don't be Fooled by those who claim
to have some over the legal limit!**

**We Have The BEST Hemp In All
Forms For You To Safely Enjoy and
Begin The Healing Process With-
out Worry! Visit Your Hometown
Dispensary Today**

Give us a call at (865) 317-1354!

or Come See Us Anytime at

531 Hwy 321 N, Suite 3

Lenoir City, TN 37771

**We Love To Help and Support
Our Community!!!**

**Now Accepting Applications
For 2 and 3 bedroom Apartments
Apply Monday and Tuesday
From 8:00 a.m. – 4:00 p.m.
MCGHEE SQUARE APARTMENTS
Lenoir City, TN
Rental Office: (865) 986-6955
TDD: (800) 848-0298**

State ctd. from pg. 4

demography and high demand for employees, but a low supply of a qualified workforce.

Programs funded by these grants will create greater opportunities for residents in these counties to take part in skills training in high-demand growth sectors.

Money for the RIFOA comes from the Governor's reserve of Workforce Innovation and Opportunity (WIOA) funds. TDLWD will provide additional program guidance to the local workforce development boards which receive funding.

Unemployment Drops in Nearly Every Tennessee County

Unemployment rates in nearly every Tennessee county, including distressed counties, declined during September, according to data released Thursday by the Tennessee Department of Labor and Workforce Development (TDLWD).

Ninety counties experienced lower unemployment in September, while the rate remained the same in one county, and increased in four counties. The latest statistics show unemployment rates are less than 5 percent in 90 counties and 5 per-

IN THE PROBATE COURT FOR LOUDON COUNTY, TENNESSEE

Regarding the Estate of:
MARTIN ROSENZ-
WEIG, deceased
DKT# 5977

NOTICE TO CREDITORS
(As required by Chapter No 171,
Public Acts of Tennessee 1939
As Amended by Public Chapter 886
on 05/09/2012)

Notice is hereby given that on the 28TH DAY OF OCTOBER 2019 Letters of Testamentary in respect of the estate of MARTIN ROSENZ-WEIG who died on the 28TH day of SEPTEMBER 2019 be issued to the undersigned by the Loudon County Probate Court of Loudon County, Tennessee. All persons, resident and nonresident, having claims, matured or unmatured against the estate are required to file the same with the Clerk of the above named court on or before the earlier of the dates prescribed in (1) or (2) otherwise their claim will be forever barred:

- (1) (A) Four (4) months from the date of the first publication (or posting, as the case may be) of this notice if the creditor received an actual copy of this notice to creditors at least sixty (60) days before the date that is four (4) months from the date of the first publication (or posting); or
- (B) Sixty (60) days from the date the creditor received an actual copy of the notice to creditors if the creditor received the copy of the notice less than sixty (60) days prior to the date that is four (4) months from the date of first publication (or posting) as described in (1) (A); or
- (2) Twelve (12) months from the decedent's date of death.

THIS THE 28TH DAY OF OCTOBER 2019

Steve Harrelson, Clerk
BY: Robyn Shannon, Deputy Clerk

By Personal Representative(s)
LISA ANN STERN

Notice to Creditors:
All Claims must be submitted on a claim form, notarized with invoices/statements; in triplicate, with a fee of \$11.00 to Loudon County Probate Court, 12671 Highway 11 West Ste. 3, Lenoir City, TN 37771

Run date 11-01-19 & 11-08-19

cent or greater in five counties.

Several of Tennessee's distressed counties saw significant improvement in unemployment compared to their August statistics. Rates dropped in 12 of the state's 15 distressed counties.

"While it is never good to have unemployment increase in even one county, it is encouraging to see unemployment showing signs of progress in many of the state's distressed counties," said TDLWD Commissioner Jeff McCord.

Once again, in September, Williamson and Sevier counties claim the lowest unemployment rates in the state. Both counties recorded a rate of 2.3 percent, which is 0.2 of a percentage point lower than their August rates.

Davidson, Cheatham, and Rutherford counties each had an unemployment rate of 2.4 percent in September. Davidson County dropped 0.1 of a percentage point, while Cheatham and Rutherford counties both declined by 0.2 of a percentage point.

Clay County recorded the state's highest unemploy-

ment in September. But the county's rate of 5.6 percent represents a 0.4 of a percentage point drop when compared to the August rate.

Hancock County is another distressed county that experienced improved unemployment in September. The county's preliminary rate of 5.2 percent is 0.7 of a percentage point lower than its revised August rate of 5.9 percent.

Hardeman County had Tennessee's second-highest unemployment rate for the

See Jobs ctd. to p.7

Public Notice

The City of Philadelphia Mayor and Board of Aldermen will meet in a regular scheduled monthly meeting on Tuesday, November 12, 2019 at 7:00 p.m. located at the United Methodist Church of Philadelphia.



Looking For Affordable

- * Health Plans
- * Life Insurance
- * Vision Insurance
- * Dental Insurance
- * Medicare Supplements

Call us Today for a FREE Quote!

9041 Executive Park Drive, Suite 250
Knoxville, TN. 37923

Office: 865-470-4162

Hours: Monday to Friday, 9 am to 5 pm

FBI ctd. from P. 4

people who actually experience your department or your agency through your work, the people who actually count on you through your work," Wray said. "Those are informed opinions, based not on some comment or sound bite, but on one case at a time, one investigation at a time, one traffic stop at a time, one 911 call at a time, one compassionate gesture at a time." On innovation, Wray said the FBI and its partners are working every day in innovative ways to protect

the country from numerous threats, such as domestic terrorism, hate crimes, and foreign influence or interference.

"We've got to keep finding new ways to work together," Wray concluded. "To keep being more efficient, more agile, more resilient."

Jobs ctd. from pg 5

month. At 5.4 percent, the rate jumped up by 0.7 of a percentage point from the August rate of 4.7 percent. Statewide, the seasonally adjusted unemployment rate

dropped to 3.4 percent in September, down 0.1 of a percentage point when compared to August. Nationally, unemployment declined in September by 0.2 of a percentage point to 3.5 percent. Job seekers can find more than 200,000

current openings from across the state on Tennessee's workforce development website www.Jobs4TN.gov. The statewide unemployment rate for October will be available Thursday, Nov. 14, 2019, at 1:30 p.m. CT.

To help put an end to drugs in your community call 988-DRUG Help Bust a Drug Dealer Today All calls confidential

HACIENDA Ayala's

MEXICAN BAR & TAQUERIA

Mexican Restaurant

Market Dr. * Lenoir City (In Front of Food City)

REAL AUTHENTIC MEXICAN FOOD AT AFFORDABLE PRICES

Outside of Mexico City!!!
You've Tried The Rest

BEST

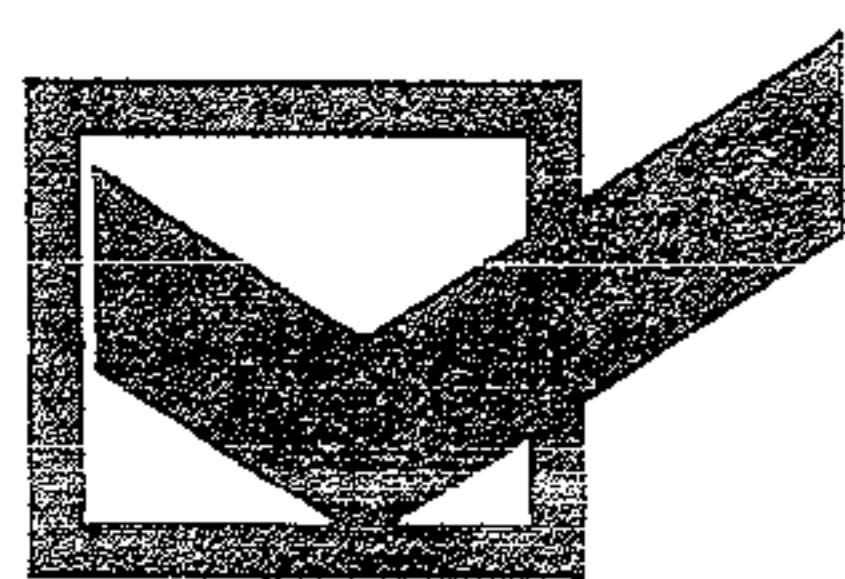
MARGARITA

Now Come Have The Best!!!

986-3553

We Accept ALL
Competitors Coupons

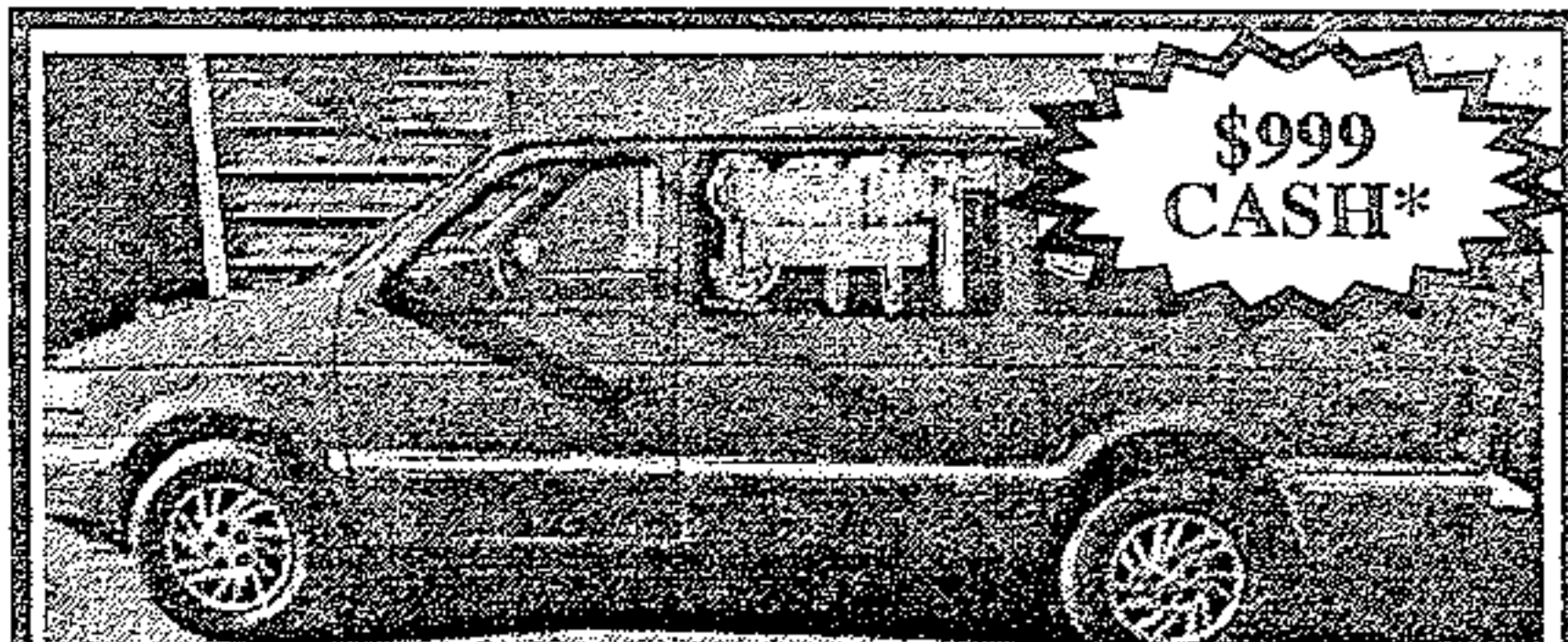
Bad Credit
Divorce
Fixed Income
Repos
Bankruptcy
No Credit



APPROVED!

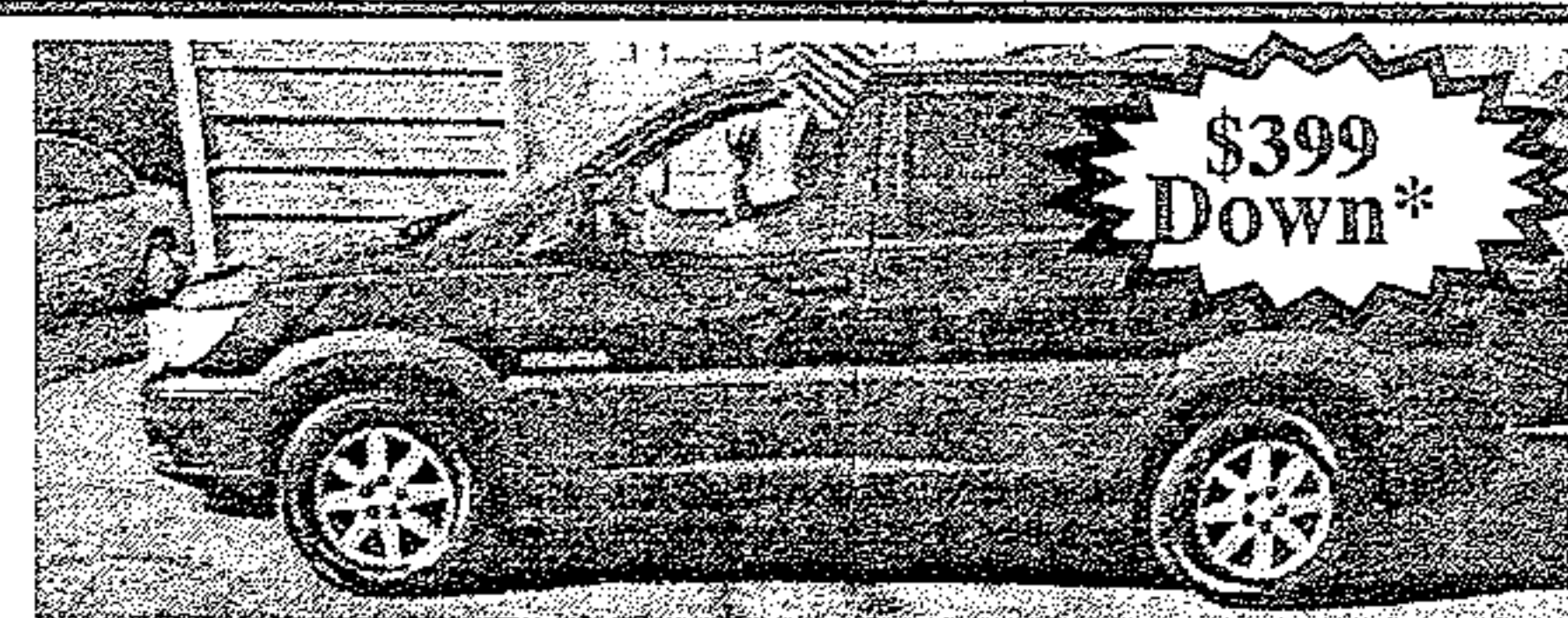
Visit Us On The Web At:
martysautosales.net

LIKE US ON
 facebook



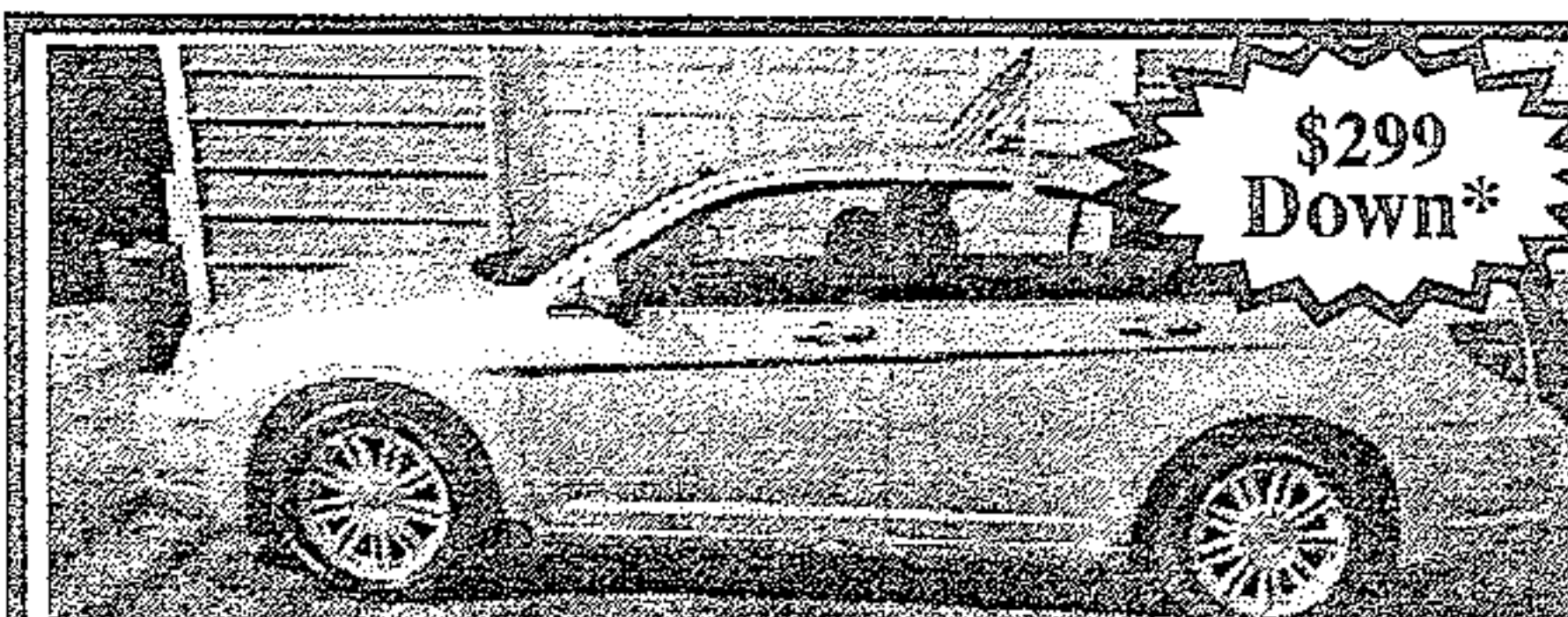
\$999
CASH*

93 Caravan, Runs Good, Great Work Van ONLY \$999 CASH*



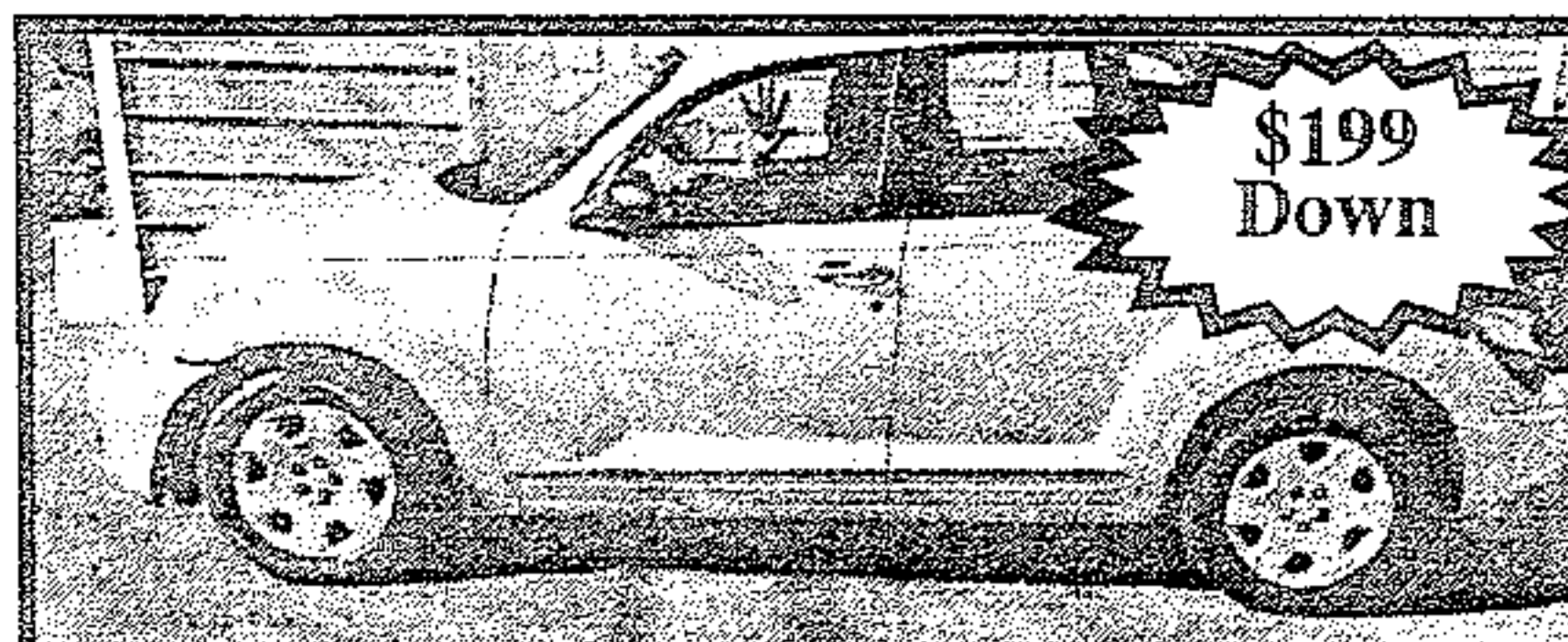
\$399
Down*

05 Rendezvous, AWD, Good Miles, ONLY \$399 Down*



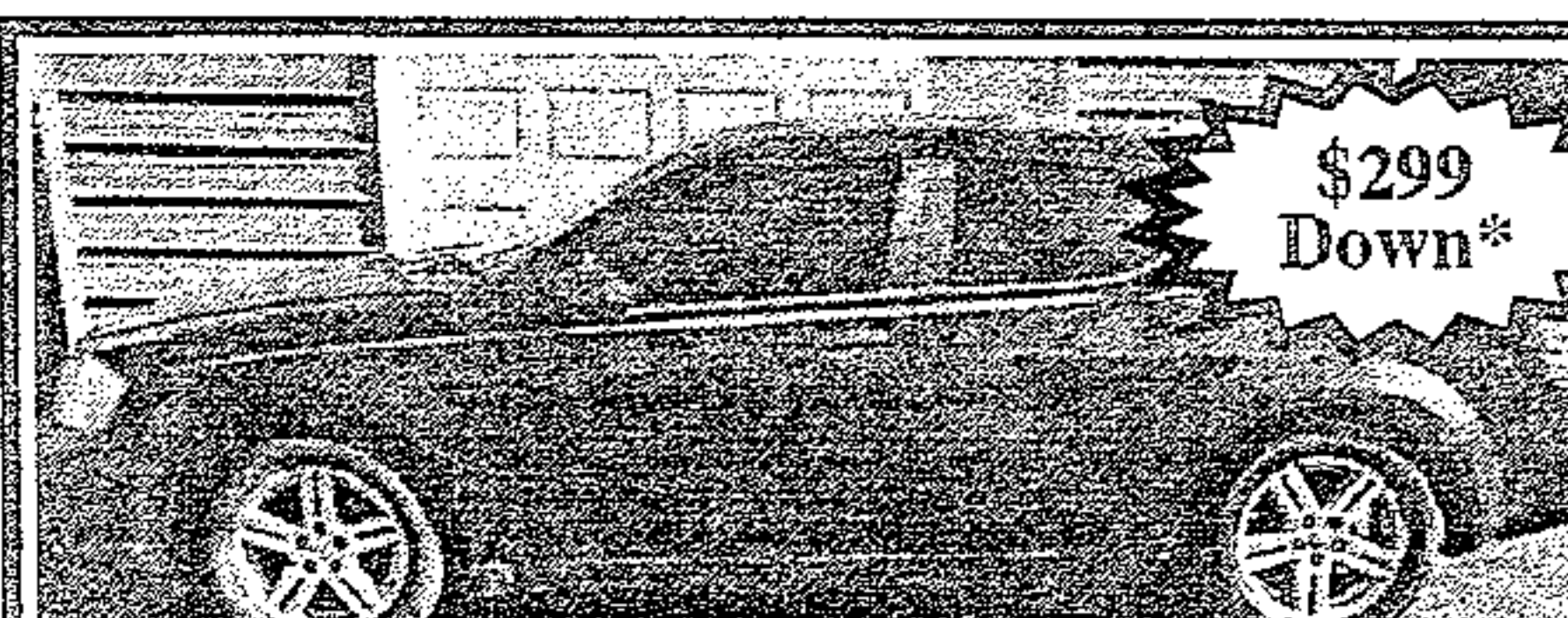
\$299
Down*

09 Sebring, Runs Great ONLY \$299 DOWN*



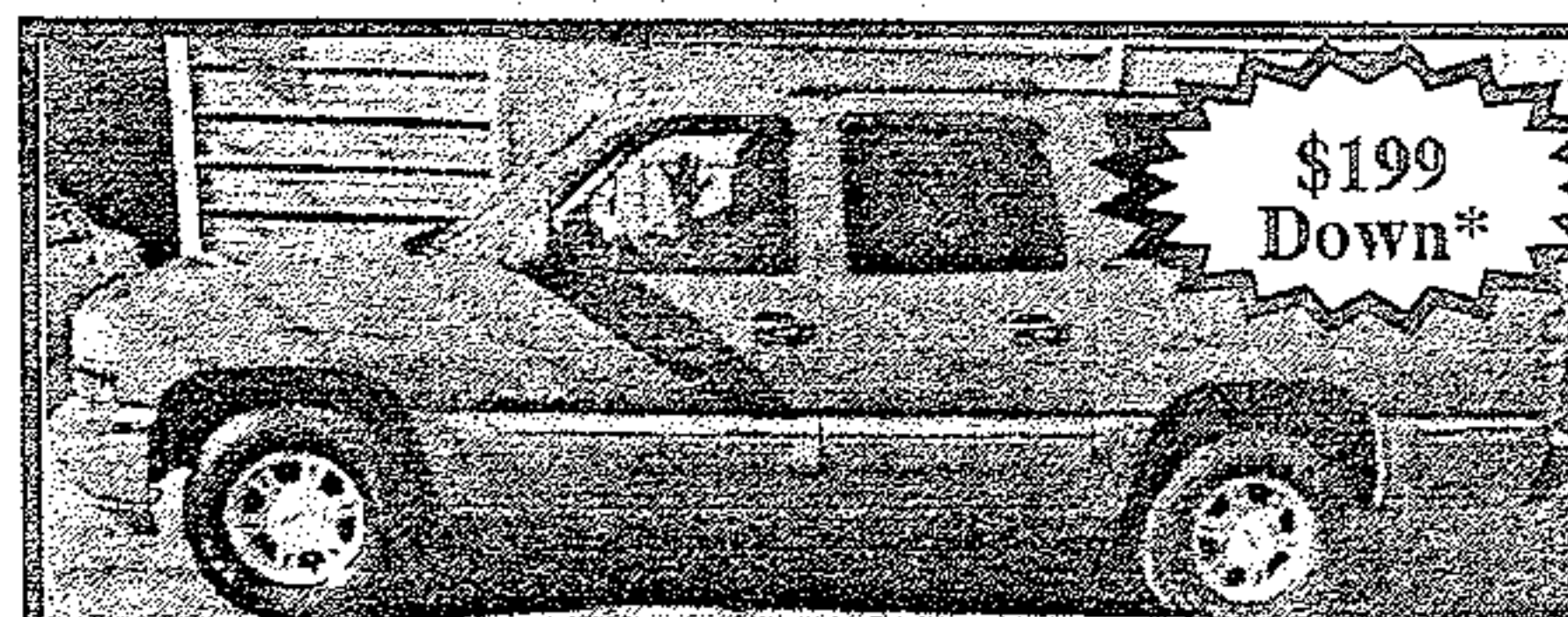
\$199
Down

08 PT Cruiser, Auto, AC, Good Miles Only* \$199 Down*



\$299
Down*

08 Avenger, Auto, AC, Runs Good ONLY \$299 DOWN*



\$199
Down*

00 Yukon, 3rd Row Seat, LOADED!!! ONLY \$199 DOWN*

NO
Credit Checks

Marty's Auto Sales
986-2222

Se Habla
Español

100%
Approval*

*See Dealer for details. All down payments plus tax, tag, title and fees.

MARTY'S AUTO SALES • 986-2222 • MARTY'S AUTO SALES • 986-2222 • MARTY'S AUTO SALES • 986-2222 • MARTY'S AUTO SALES • 986-2222 • MARTY'S AUTO SALES • 986-2222 • MARTY'S AUTO SALES • 986-2222